

goodnature®



GUIDE

trapping rats & mice

Ⓢ automatic

Ⓢ non-toxic

Ⓢ humane

gallagher.eu/goodnature

WHY IS IT NECESSARY TO KILL RATS & MICE?

THEY DAMAGE HOMES & GARDENS

Rats and mice like to chew on cables, which can cause a lot of damage in the house, or in the worst case even start a fire. They also chew on furniture and wood. In addition, they are constantly looking for food and eat practically anything.

Rats and mice can cause damage in your garden in various ways, for example by eating fruit and vegetables and chewing on doors and cables. They also damage your lawn by digging holes and tunnels.

THEY CAN CARRY DISEASE

Rats and mice can carry diseases such as hantavirus, leptospirosis, Bubonic Plague and rat bite fever. They can host fleas and ticks that can carry lyme and other diseases.

RODENT CONTROL METHODS

Goodnature believes that rats and mice deserve an instant and painless death. Sadly, some of the most common ways to kill rats and mice are incredibly cruel. Glue traps are a cruel way to end a rodent's life and poisons result in a slow, painful death and exposes pets, other wildlife and children to the risk of harm. Every year vets treat thousands of pets for rodent poisoning.

Goodnature has trapped millions (seriously, millions) of rats and mice and have collected the knowledge of what it takes to achieve success as highlighted in this guide.



RATS & MICE CAN...

- **Damage your home or business**
- **Carry diseases**
- **Reproduce rapidly**
- **Start fires by chewing through wires**
- **Contaminate food & countertops**

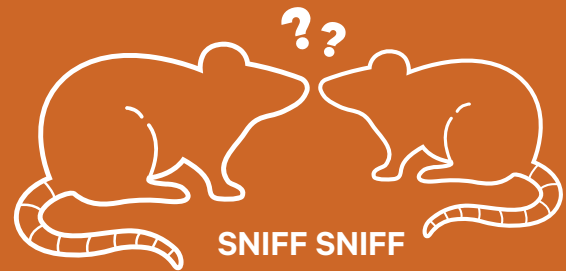
TRAPPING RATS

NEOPHOBIA - A FEAR OF ANYTHING NEW

Rats are neophobic — they are afraid of anything they have not seen, smelled or tasted before. For example, when a rat encounters a new food source, they will only try a tiny amount to see if it makes them sick. If it does, they'll never eat it again. A trap is something new to the rat and they will initially fear it. This is why it can take several days or even weeks to trap a rat. To combat this there are several things you can do.

DID YOU KNOW?

Rats will smell each other's breath to find out what foods are in the area and if they are safe to eat.



TRAPPING PRO TIPS

ELIMINATE FOOD COMPETITION

Try to find out what the rats are eating. This food source is competition to your bait and trap. The best thing you can do is eliminate the food source all together. For example, if rats are in a chicken coop — clean up all of the uneaten feed and store it somewhere the rats cannot get. Rats are much more likely to try something new if they are hungry.

USE A CAMERA

Every trapping site is different and using what you learn from a camera can be crucial. Using a camera helps you track rat movements around your trap. This is a great way to understand what's going on and how to improve.

PRE-FEED NEAR YOUR TRAP

Because the rat is afraid of your trap and bait, it is best to pre-feed your trap site. That means you should put bait by itself around the trapping area, so rats can discover it and become comfortable with it as a food source. This way, when it finds the bait in the trap it will be more likely to go for it.

Pre-feeding is like the sample counter at the grocery store — a proven marketing strategy on people and rats!



HOW TO PRE-FEED

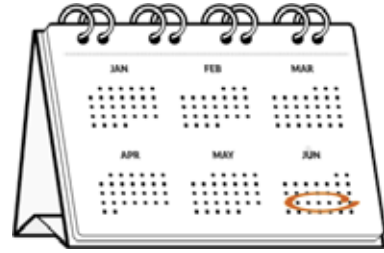


1. LURE THEM IN

Place small dots of bait around the entrance of your trapping area. This increases the food available to rats and mice.

3. STOP PRE-FEEDING

Now the only way your animals can access the lure is by entering your trap.



2. REPEAT THE PROCESS

Repeat this for five days. This builds their preference for the bait and gets them in the habit of visiting the trap(s) to eat.

Any external food source is competition to your bait and trap!



TRY A DIFFERENT BAIT



GIVE THEM WHAT THEY WANT

If you know that rats are getting into the dog food, chicken coop, horse feed or any other food source, you can try to make bait from it. Home-made bait will usually work for a few days; it will need to be regularly refreshed.

Rodent Detector Cards

Article number 483025



Our Rodent Detector Cards help you think like a rat. It's important that you assess - don't guess - where to position your A24 Trap. The detector cards show you where rats and mice in your area feel safe to eat, therefore where you need to install your trap. This might be somewhere different from where you've seen or heard them. The cards contain our long-life lure for rats and mice. By checking out the bite marks on the cards after a few nights, you'll know where your pests are eating and exactly where to position your trap.

Bait Holder Cup

Article number 081936

Holder for filling your own bait, compatible with Goodnature A24.



Rat & Mouse Lure Pouch Chocolate

Article number 755015 (10) / 083312 (1)



Pre-feed lure encourages rats and mice toward your trap and away from any competing food sources making your trap irresistible whenever a pest shows up to check it out. Because our lures are totally toxin free there's no-risk of secondary poisoning. Making them safe to use around pets, wildlife and children. The nut butter lure is an artificial nut based lure which takes away the usual allergen risks associated with regular peanut butter.

Pre-feeding around your trap also gives resident rodents a taste of the lure that's inside your trap, encouraging them to stick their head up into the trap to try to get some more from your Automatic Lure Pump.

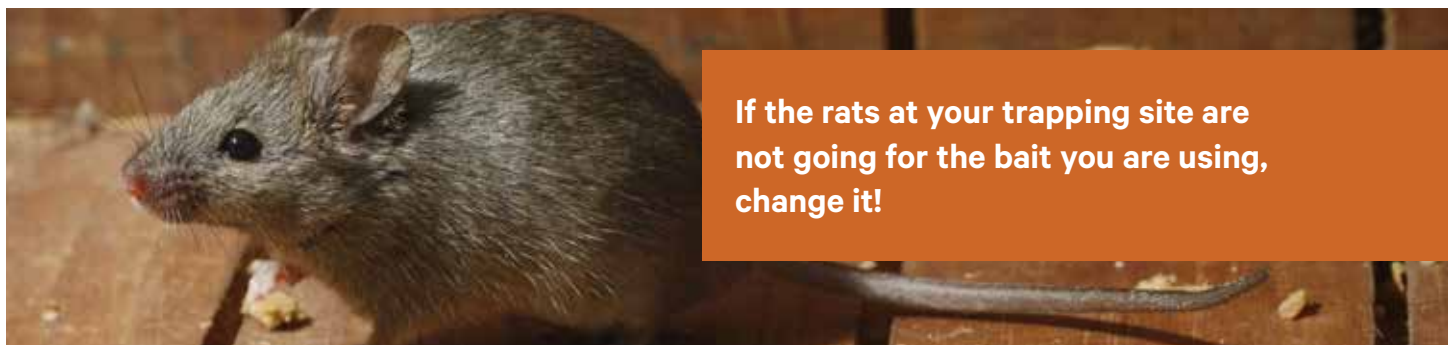
Rat & mouse lure pouch Nut butter

Article number 483117 (10) / 483100 (1)

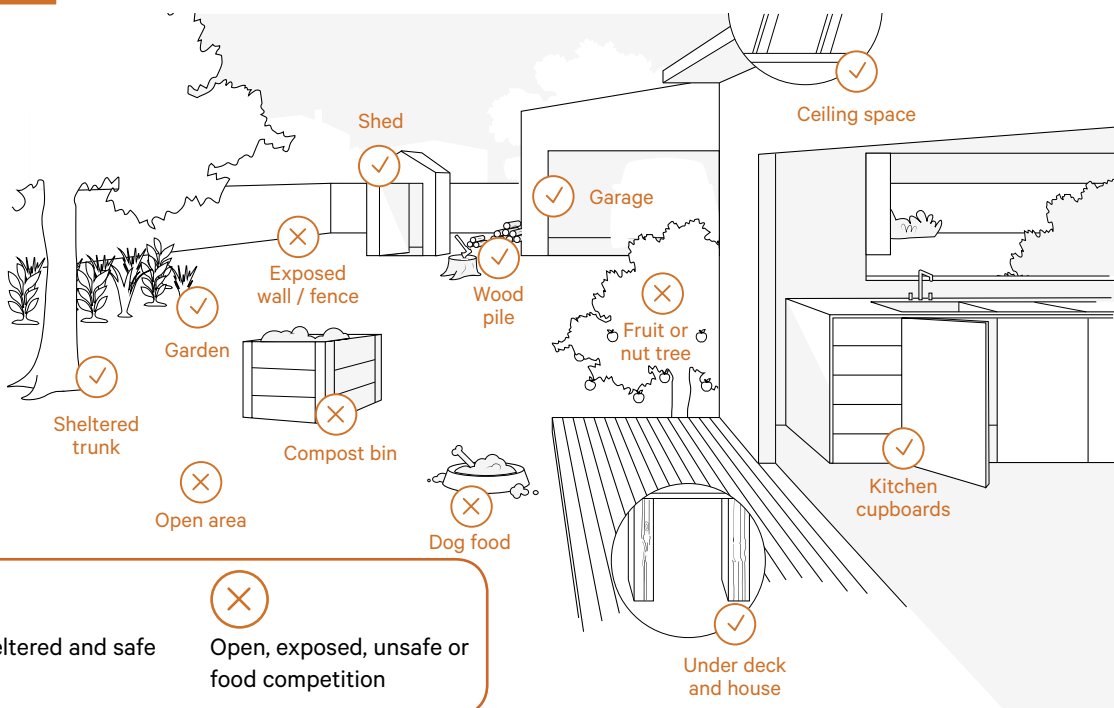


Find out which lure works best for your place.

According to our field trials, all of our lures are equally effective when it comes to attracting those pesky pests into the A24. But, if you want to try something new, have a preference for one flavour over the other or you think the resident rodents at your place might like another one better, give Chocolate or Blood lure a go.



LOCATION, LOCATION, LOCATION!



TRAPPING MICE

EASIER THAN TRAPPING RATS

The House Mouse is the most common species of mouse in Europe. While they are easier to catch than rats, they reproduce quicker, and they go unnoticed longer. So often a homeowner will have many — even dozens of mice by the time they discover one.

A mouse is likely to create its home close to a food source. Mice like the kitchen or beneath the sink or in the walls. They also like being cozy and will make their nests on fibrous, soft materials like dry grass, old clothing, and papers.

TRAPPING MICE

PRE-FEED YOUR TRAP

It is best to pre-feed your trap site. That means you should put bait by itself around the trapping area, so mice can discover it and become comfortable with it. This way, when it finds the bait in the trap, it will be more likely to go for it.

SET MULTIPLE TRAPS

Because mice are usually numerous, it is important to set many individual traps, or to use an automatic trap that will kill many mice in a single night.

COMMON RAT & MOUSE SPECIES

RATS



Brown Rat a.k.a. Norwegian Rat (*Rattus norvegicus*)

Norway rats are larger than most other types of rats, ranging anywhere from 10 to 20 inches total, including the tail. They can weigh as much as a pound. Norway rats are omnivores and will eat nearly anything they can get their paws on. This includes small birds, eggs, all types of plants and small invertebrates.

Black Rat a.k.a. Roof Rat (*Rattus rattus*)

Darker than brown rats, they are usually about 5 to 7 inches long, with a tail that measures up to 8 inches. They can weigh up to half a pound. Despite being known as black rats, they can also be medium or light brown in color and have a lighter underside. Their fur is usually scraggly. Black rats are omnivores as well and eat a wide variety of foods, including seeds, fruit, stems, leaves, insects, and small animals such as birds. They're especially drawn to food left out for dogs and cats.

MICE



House Mouse (*Mus musculus*)

1-4 inches in length, including its tail with weight ranging between 0.4 and 1 ounces. They may be gray, brown, or even white in color, and have a triangular snout with long whiskers. A mouse also has a floppy, large ear, and a thin, hairy, long tail. They exist across North America and can survive up to 6 years, though the majority live for a year. The house mouse is timid, social, nocturnal, and territorial. They are much easier to catch than their rat cousins.

DID YOU KNOW?

Contrary to popular belief, cheese is not mice's favorite food! They prefer grains, chocolate, seeds, dry pet foods, and fruits.



DON'T STOP TRAPPING

Never stop trapping! Once you clear out the pests you have, set up a trap with a long life bait that catches the next mouse to come along.

USE A CAMERA

Every trapping site is different and using what you learn from a camera can be crucial. Using a camera helps you track rat movements around your trap. This is a great way to understand what's going on and how to improve.

THE A24 TRAPPING KIT

YOUR COMPLETE TRAPPING SOLUTION

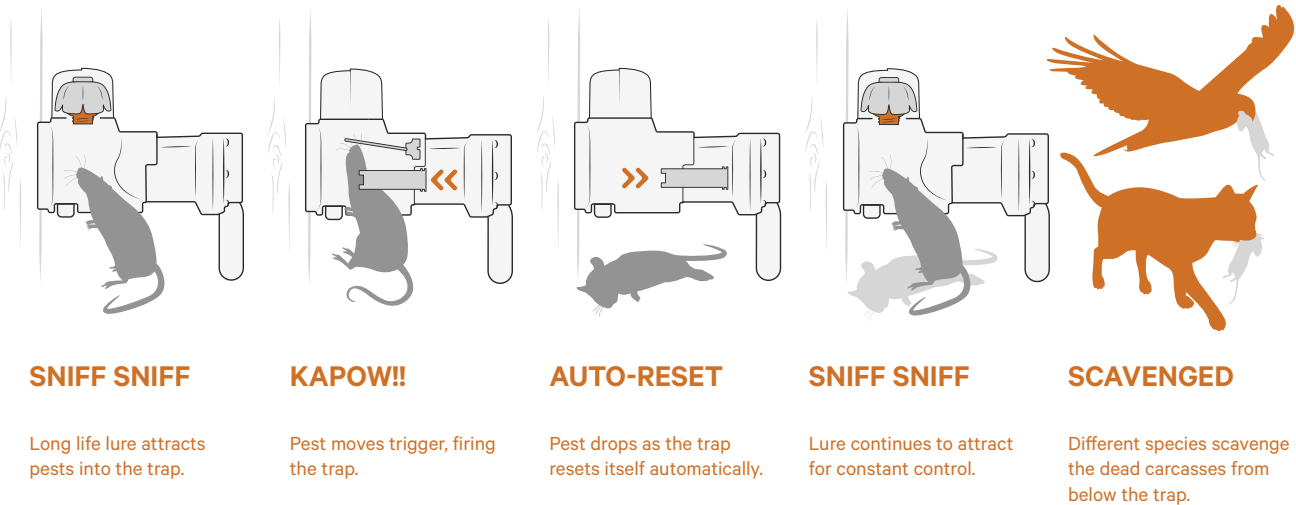
The Goodnature A24 Home Trapping Kit is an automatic, non-toxic, safe, and easy to use trap that gives you constant control of your rat and mouse problem. No more checking and resetting traps, it resets automatically, 24 times. Also, our lures are toxin free with no need for nasty poisons, so you know it's safe. To learn more about the Goodnature product line head to gallagher.eu/goodnature or ask your local dealer.

 automatic

 non-toxic

 humane

HOW IT WORKS



Have questions or need tips?
visit - gallagher.eu/goodnature



THE A24 TRAPPING KIT

IT ALL STARTS WITH A SNIFF

Our traps are a little different from others. They use CO2 which allows them to automatically reset. The rat or mouse enters the A24 through the opening at the bottom of the trap. Enticed by the lure, the rat or mouse sticks its head up causing the trigger to trip and fire a striker powered by CO2, instantly killing the rodent. Seconds after this, the A24 resets and is ready for the next pest, giving you constant control.

TRAP SAFELY

We've done extensive testing to ensure that the striker in our A24 traps goes off every time, without fail. Whenever there is a pest in your trap, you can trust that the trap will do its job, the animal will not suffer, and you aren't using nasty toxins that could harm the environment, pets, or children.

A24 Rat & Mouse Trap with Counter

Article number 758641

The Goodnature® Rat & Mouse Trap automatically kills 24 rats or mice - one after the other, before you need to replace the gas canister. It uses non-toxic lures and kills pests instantly and humanely. It comes with a Digital Strike Counter which lets you know how many rats or mice have been killed. The trap comes with a trap mount which is easily attached to a tree trunk or wooden post. If your rodent problem is indoors, or you want to move the trap around more easily, you can add a Trap Stand.



A24 Trap stand

Article number 725643

The Goodnature® A24 Trap Stand is great for when your rodent problem is indoors or you need to move your trap around to target multiple rodent hot spots. It's perfect for when you don't have a tree, post or a wall space to attach the trap to - like gardens, ceilings, sheds or under your sink. Plus, the tray makes it easy to dispose of dead pests without touching them.



A24 trap mount

Article number 750836

Having an extra trap mount up your sleeve will make it easier for you to move your A24 trap between different locations. With the already installed mounting brackets you can easily move your trap from one location to the next, without further need for tools.



Automatic Lure Pump Chocolate

Article number 758702

The Goodnature® Automatic Lure Pump is designed to make it easier to keep rats and mice under constant control. The lure pump is a set-and-forget system, reducing the number of times you need to check your trap to just twice a year. Once installed and activated, the lure pump refreshes your trap with non-toxic chocolate lure steadily across six months. Ensuring your trap has fresh lure increases your trapping success.



Rat & mouse lure pouch Nut butter

Article number 483094

Pre-feed lure encourages rats and mice toward your trap and away from any competing food sources making your trap irresistible whenever a pest shows up to check it out. Because our lures are totally toxin free there's no-risk of secondary poisoning. Making them safe to use around pets, wildlife and children. The nut butter lure is an artificial nut based lure which takes away the usual allergen risks associated with regular peanut butter.



Digital Strike Counter Goodnature A24

Article number 745696

The Goodnature® Digital Strike Counter will do the counting. When the counter hits 24, you know it's time to replace the CO₂ gas canister. The compact digital counter slides onto the CO₂ gas canister of your trap.



Blocker for A24

Article number 483018

We've designed our A24 trap to target specific pests only. The chance of trapping anything you want to protect is very small. While the Blocker for A24 isn't a necessity, as some animals can be inquisitive, it's extra protection you can take for peace of mind. If you have very small pets that are free to roam near the trap, we recommend adding the Blocker for A24. For more information, check out our advice for safe trapping near pets.

Made from 100% recycled plastic.



Rodent Detector Cards

Article number 483025

Our Rodent Detector Cards help you think like a rat. It's important that you assess - don't guess - where to position your A24 Trap.

The detector cards show you where rats and mice in your area feel safe to eat, therefore where you need to install your trap. This might be somewhere different from where you've seen or heard them.

The cards contain our long-life lure for rats and mice. By checking out the bite marks on the cards after a few nights, you'll know where your pests are eating and exactly where to position your trap.



Rat & Mouse Lure Pouch

Article number 755015 (10) / 083312 (1)

Goodnature® Rat & Mouse Lure is long-life, toxin-free and tastes & smells of chocolate. It's so attractive to rats that 24 out of 24 choose it as their last meal!

Because our lures are toxin-free, they're safe for you, your pets and wildlife. It has been scientifically formulated for long lasting attraction in all environments.

The lure can be used to pre-feed the area around your trap, to encourage rodents toward the trap.

Pouch size: 200g



toxin free

Rat & mouse lure pouch Nut butter

Article number
483117 (10) / 483100 (1)

Pre-feed lure encourages rats and mice toward your trap and away from any competing food sources making your trap irresistible whenever a pest shows up to check it out. Because our lures are totally toxin free there's no-risk of secondary poisoning. Making them safe to use around pets, wildlife and children. The nut butter lure is an artificial nut based lure which takes away the usual allergen risks associated with regular peanut butter. Pouch size: 200g



Bait Holder Cup

Article number 081936

Holder for filling your own bait, compatible with Goodnature A24.



Replenishment Kit - 1 Year

Article number 750850

Your refill pack for your A24 rat trap contains everything you need to keep rats and mice under constant control for a year.

-
- 2 x CO2 capsules (24 kills per capsule)
- 2 x automatic bait pumps (ALP)
- A rodent detector kit that allows you to find the best places to place your trap
- A practical guide with tips to increase your success



CO2 Canister

Article number 725056 (30) / 745603 (1)

The CO2 canister is what powers the A24 Trap, enabling it to automatically reset and kill 24 rats or mice before it needs replacing.

To maximize the life of your trap, we recommend using Goodnature® CO2 canisters.



goodnature®

Your Goodnature® dealer:

T +44 (0)247 647 2825
E info.uk@gallaghereurope.com

Colour and appearances may slightly differ to those of the actual items.



1162ENG © 2021